

# MANHOLE CROSS BAR LOCKABLE 1326MM

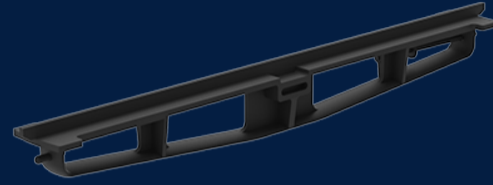
Product Code: 50201035



## MANHOLE CROSS BAR LOCKABLE 1326mm

 MATERIAL  
Ductile Cast Iron

 SIZE  
1326mm (L) x 57mm (W) x 149mm (D)



### Features & benefits



### Full specifications

Material	Ductile iron covers are manufactured from spheroidal graphite cast iron to achieve specified tensile strength and elongation requirements. Ductile iron covers can be utilised in a variety of applications to meet strength and durability requirements.
----------	---

Contact Us

Email: [sales@cubis-systems.com.au](mailto:sales@cubis-systems.com.au)

Phone: 1800 665 356