

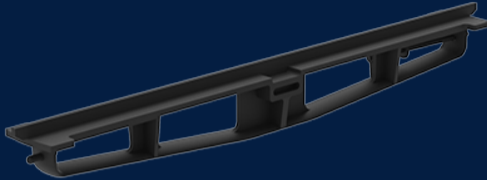
# CROSSBAR MANHOLE 832MM LOCKING

Product Code: 50201870



 MATERIAL  
Ductile Cast Iron

 SIZE  
832mm (L) x 70mm (W) x 60mm (D)



## Features & benefits



## Full specifications

**Material** Ductile iron covers are manufactured from spheroidal graphite cast iron to achieve specified tensile strength and elongation requirements. Cubis' ductile iron covers are in accordance with requirement specified in AS1831 and AS3996. Ductile iron covers can be utilised in variety of applications to meet strength and durability requirements.

Contact Us

Email: [sales@cubis-systems.com.au](mailto:sales@cubis-systems.com.au)

Phone: 1800 665 356