

# LINK SLAB TMR 2100-2A 2400MM NOMINAL LENGTH

Product Code: 50207207

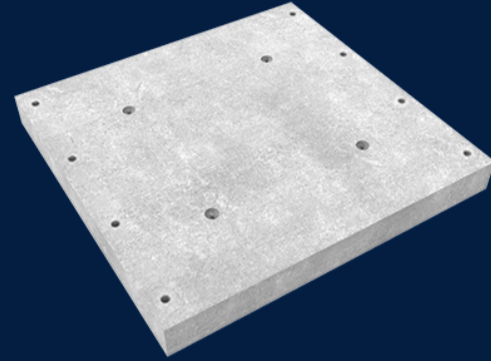


Link slabs are TMR approved products and they were designed to link box culverts and create high flow drainage solutions, but simultaneously they can be used as road or train tracks underpasses. As box culverts, Link slabs have a lifespan of 100 years.

 MATERIAL  
Precast Concrete

 SIZE  
2400mm (L) x 2100mm (W) x 260mm (D)

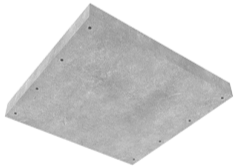
 LOAD RATING  
D



## Features & benefits

### High flow drainage

Multiple conduits help channel the water away quickly to prevent flooding. There is no limit of how many rows of box culverts can run parallel to each other and therefore the same applies to link slabs.



## Full specifications

Material	mPa40 concrete mPa40 concrete mPa40 concrete mPa40 concrete mPa40 concrete
Australian Standards	AS 3996: 2019
How it works	Base slabs are dropped into place followed by box culverts. If box culverts run parallel, then a link slab is placed in between to enclose the middle conduit. Minimal amount of backfill is required to complete the project.

Contact Us

Email: [sales@cubis-systems.com.au](mailto:sales@cubis-systems.com.au)

Phone: 1800 665 356