

LINK SLAB TMR 1800-2A 2400MM NOMINAL LENGTH

Product Code: 50207205

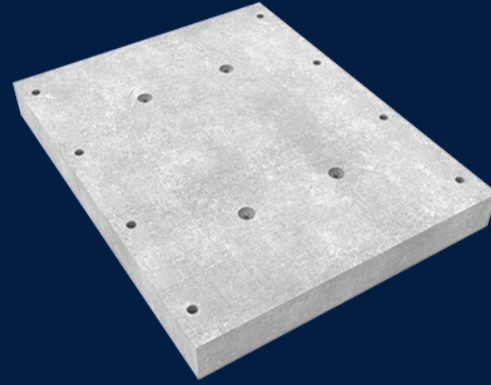


Link slabs are TMR approved products and they were designed to link box culverts and create high flow drainage solutions, but simultaneously they can be used as road or train tracks underpasses. As box culverts, Link slabs have a lifespan of 100 years.

 MATERIAL
Precast Concrete

 SIZE
2400mm (L) x 1800mm (W) x 260mm (D)

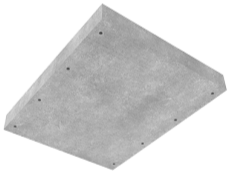
 LOAD RATING
D



Features & benefits

High flow drainage

Multiple conduits help channel the water away quickly to prevent flooding. There is no limit of how many rows of box culverts can run parallel to each other and therefore the same applies to link slabs.



Full specifications

Australian Standards

AS 3996: 2019

How it works

Base slabs are dropped into place followed by box culverts. If box culverts run parallel, then a link slab is placed in between to enclose the middle conduit. Minimal amount of backfill is required to complete the project.

Contact Us

Email: sales@cubis-systems.com.au

Phone: 1800 665 356