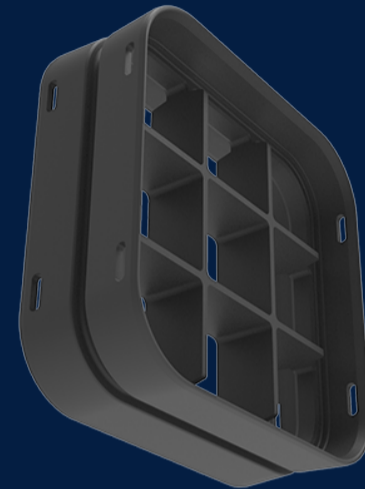



# MULTIDUCT™ 9 WAY DOUBLE SOCKET

Product Code: 50201740

MULTIduct™ is a durable, lightweight and structural multiple duct cable protection system offering a modern alternative to traditional cable ducting systems. 9 way double socket is used in cases where the existing duct position is unknown and therefore allows seamless integration.



 MATERIAL  
High Density Polyethylene (HDPE)

 SIZE  
125mm (L) x 368mm (W) x 368mm (D)

 LOAD RATING  
B

## Features & benefits

### Lightweight HDPE

Can be transported by a ute and assembled by a single person without the need of heavy lifting machinery.

### Quick assembly

Each unit can be installed in under one minute

### Application

Nine slots for nine applications



## Full specifications

Material	Manufactured from high density polyethylene (HDPE), MULTIduct™ offers a lightweight, high strength to weight unit. With parts weighing below 20kg MULTIduct™ offers significant health and safety advantages permitting a single person lift and install.
Load Rating	Infrastructure Products Australia' MULTIduct™ manufactured to a Class B load rating (ultimate limit state design load of 10kN) under the Australian Standard AS/NZ 3996.
How it works	Interlocking male and female clips make installation process seem like a puzzle. Installation is as easy as lining the clips together and clicking the duct into place. Interior of the ducts is seamless and eliminates disengagement during cable pulling.