

AX S™ MANHOLE COVER CAST IRON 636x608


Product Code: 50201058

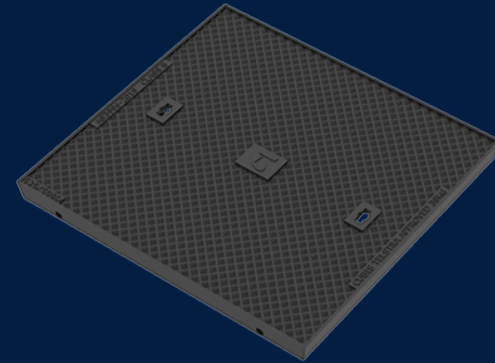


Our full Cast Iron Cover range delivers a strength and durability solution that can be applied in industry sectors including Communications, Energy, Transportation and Water.

 MATERIAL
Ductile Cast Iron

 SIZE
636mm (L) x 608mm (W) x 54mm (D)

 LOAD RATING
B



Features & benefits

Superior design that meets Australian Standards

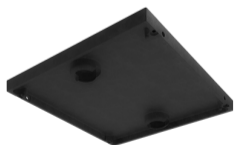
Infrastructure Products Australia cast iron cover range is designed and built up to a Class D load rating, meeting the Australian Standard AS/NZ 3996.

Locking and security capabilities

Our cast iron cover range has locking and security capabilities to ensure the utmost protection for your valuable assets.

Personalised for your Client, Customer or Project

We can customise these cast iron covers to showcase a company's company or the cover's unique application.



Full specifications

Material	Ductile iron covers are manufactured from spheroidal graphite cast iron to achieve specified tensile strength and elongation requirements. Ductile iron covers can be utilised in a variety of applications to meet strength and durability requirements.
----------	---

Contact Us

Email: sales@cubis-systems.com.au

Phone: 1800 665 356